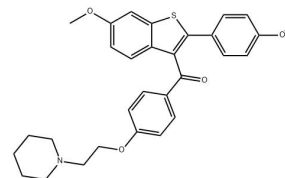


## Technical Data Sheet

### (4-(2-(PIPERIDIN-1-YL)ETHOXY)PHENYL)(6-METHOXY-2-(4-METHOXYPHENYL)BENZO[B]THIOPHEN-3-YL)METHANONE

#### Compound Information

<b>Product Name:</b>	(4-(2-(PIPERIDIN-1-YL)ETHOXY)PHENYL)(6-METHOXY-2-(4-METHOXYPHENYL)BENZO[B]THIOPHEN-3-YL)METHANONE
<b>CAS No.:</b>	84541-38-8
<b>Molecular Formula:</b>	C <sub>30</sub> H <sub>31</sub> NO <sub>4</sub> S
<b>Molecular Weight:</b>	501.64
<b>Revision Date:</b>	2026-04-15



#### Analytical Information

Tests	Specifications
Native Source	synthetic
Appearance	Yellow solid
Purity (TLC)	98%
Atmosphere	Inert gas
Melting Point	75-85°C
Solubility	soluble in DMF, DMSO, Methanol

Disclaimer: This information relates only to the specific material designated and may not be valid for such material used in combination with any other materials or in any other process. Such information is to be the best of the company's knowledge and believed accurate and reliable as of the date indicated. However, no representation, warranty or guarantee of any kind, express or implied, is made as to its accuracy, reliability or completeness and we assume no responsibility for any loss, damage or expense, direct or consequential, arising out of use. It is the user's responsibility to satisfy himself as to the suitability & completeness of such information for his own particular use.