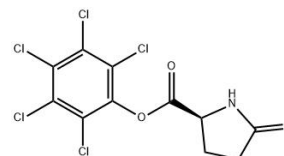


Technical Data Sheet

L-PYROGLUTAMIC ACID PENTACHLOROPHENYL ESTER

Compound Information

Product Name:	L-PYROGLUTAMIC ACID PENTACHLOROPHENYL ESTER
CAS No.:	28990-85-4
Molecular Formula:	C ₁₁ H ₆ Cl ₅ NO ₃
Molecular Weight:	377.44
Revision Date:	2026-04-15



Analytical Information

Tests	Specifications
Appearance	White powder
Assay	99.5% (Elemental Analysis)
TLC	Chloroform/Methanol/Acetic acid (90:8:2) Chloroform/Methanol/Toluene/H ₂ O (8:8:8:1) Toluene/Dioxane/Acetic acid (95:25:4) Plate: Silica gel 60 F254 Detected by UV, ninhydrin, chlorine-tolidine
Elemental Analysis	C = 35.0%; H = 1.6; N = 3.7%
Melting Point	185-190°C
Solution	Clear, colorless solution (50 mg/mL in chloroform/methanol 1/1)
Optical Rotation (α _{24/D})	+20.5° (1% in DMF)

Disclaimer: This information relates only to the specific material designated and may not be valid for such material used in combination with any other materials or in any other process. Such information is to be the best of the company's knowledge and believed accurate and reliable as of the date indicated. However, no representation, warranty or guarantee of any kind, express or implied, is made as to its accuracy, reliability or completeness and we assume no responsibility for any loss, damage or expense, direct or consequential, arising out of use. It is the user's responsibility to satisfy himself as to the suitability & completeness of such information for his own particular use.